



## INTRODUCTION

Asia Pacific Investment Partners (APIP), founded in 2001, is a Mongolia-focused investment platform with a growing emphasis on natural resources and mining development. Through its subsidiary, Mongolian Metals Corporation (MMC), the Group is advancing a highly prospective gold and copper exploration portfolio in southwestern Mongolia. Leveraging over two decades of local operating experience, regulatory expertise, and international partnerships, APIP is positioned to develop and scale mining assets in one of the world's most underexplored mineral regions.

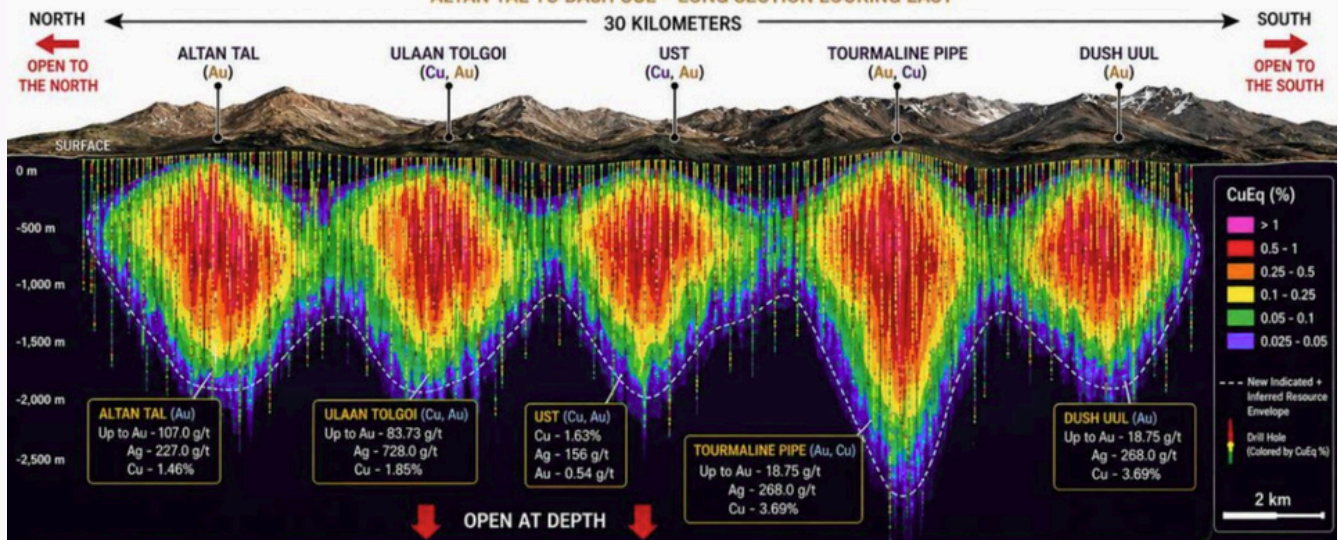
## THE OPPORTUNITY

Mongolia is one of the most resource-rich and underdeveloped mining jurisdictions globally, with significant deposits of gold, copper, and strategic minerals. MMC's license areas are located within a proven mineralized corridor, adjacent to major discoveries such as Erdene Resource Development's Bayan Khundii project, which has attracted substantial international investment and validation.

With extensive geological work already completed – including mapping, geochemical analysis, and initial drilling – MMC is entering a critical value-creation phase through its 2026-2027 exploration program. This presents investors with early-stage exposure to a high-potential mining asset, with clear pathways toward resource definition, development, and a potential public listing.

### 30 KM WORLD-CLASS MULTI-METAL MINERAL SYSTEM

ALTAN TAL TO DASH UUL – LONG SECTION LOOKING EAST

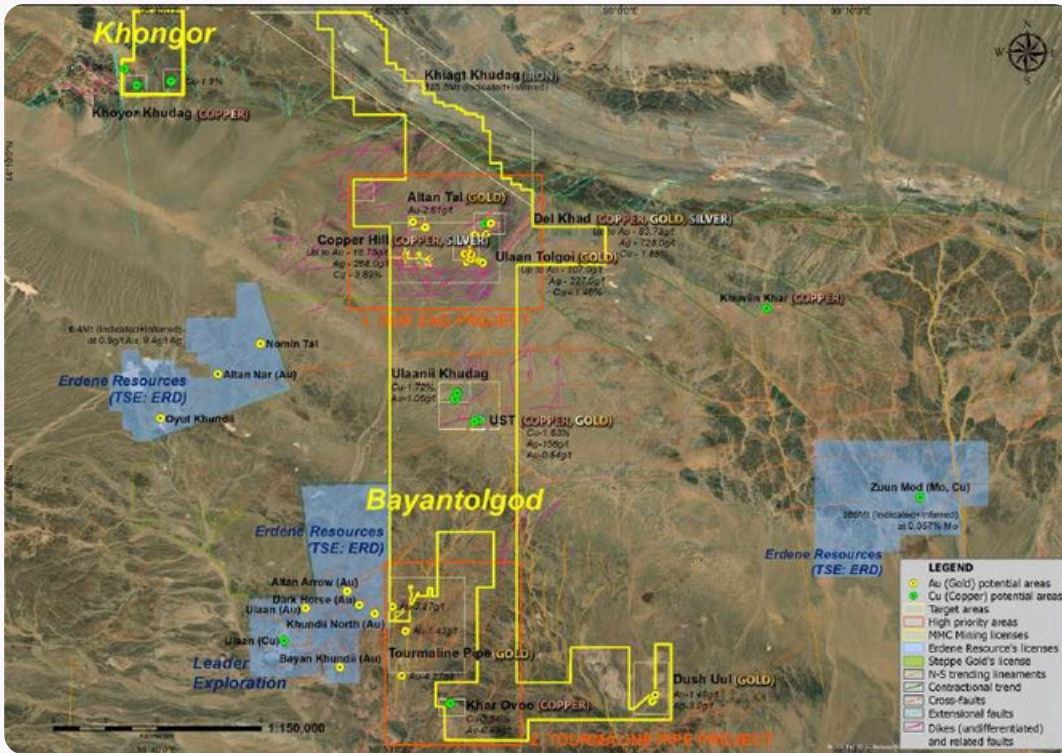




**Mongolian Metals Corporation (MMC)** is a privately held exploration company focused on developing its highly prospective Khongor gold and copper license area in Southwestern Mongolia. Covering **29,500 hectares**, the **Khongor site** has been the subject of extensive geological mapping, geochemical and geophysical surveys, and targeted drilling, positioning MMC to advance the exploration and eventual development of this strategically significant mineral resource.



Mongolian Metals Corporation's 27,979-hectare Bayantolgod license represents a highly strategic and valuable asset, located adjacent to Erdene Resource Development's flagship Bayan Khundii project. Extensive geological mapping, geophysical surveys, geochemical analyses, and initial drilling have already confirmed high-grade gold, copper, and silver mineralization, providing a solid foundation and significantly reducing exploration risk.

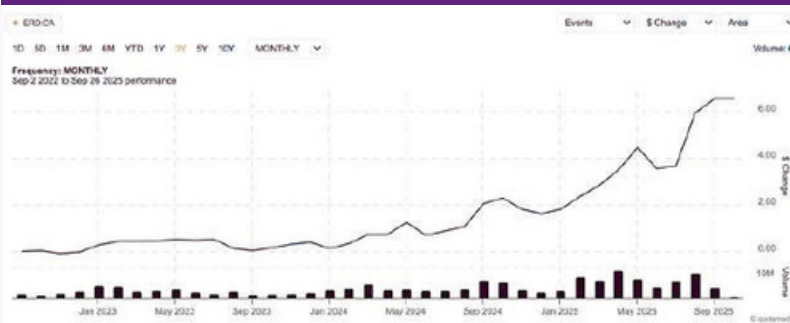


With all the preparatory laboratory work completed, the company is uniquely positioned to execute its 2026-2027 drilling program, expand geological findings, and move toward a public listing in 2028. Mongolia's mineral-rich terrain, mining-friendly regulations, and proximity to China's manufacturing hub amplify the strategic value of this land, offering investors a rare opportunity to participate in a frontier-market project with substantial upside potential and multiple pathways for future growth. Erdene Resource Development is a Canadian-listed mining explorer-developer operating

## Prime Location and Industry Benchmark

Last	\$8.27
Intraday High	\$8.35
Year High	\$8.68

## Market Capitalization \$505.00M



in southwestern Mongolia, immediately adjacent to our licensed area, with its land facing our fence. Its flagship project is the Bayan Khundii gold deposit (within the Khundii Minerals District), along with the Altan Nar and Dark Horse prospects, and the large Zuuu Mod copper-molybdenum deposit nearby. Erdene completed a Feasibility Study for Bayan Khundii in mid-2020 and, in early 2024, commenced construction under a strategic joint venture with Mongolian Mining Corporation (MMC), which invested US\$40 million for a 50% stake in the subsidiary holding key licenses. As of September 2025, its stock is trading on the Toronto Stock Exchange under the ticker ERD.TO, at approximately CAD \$7.70 (52-week range ~ CAD \$2.49 to ~CAD \$8.04), and on the OTC (U.S./OTCQB) under ERDCD at around US\$5.49.